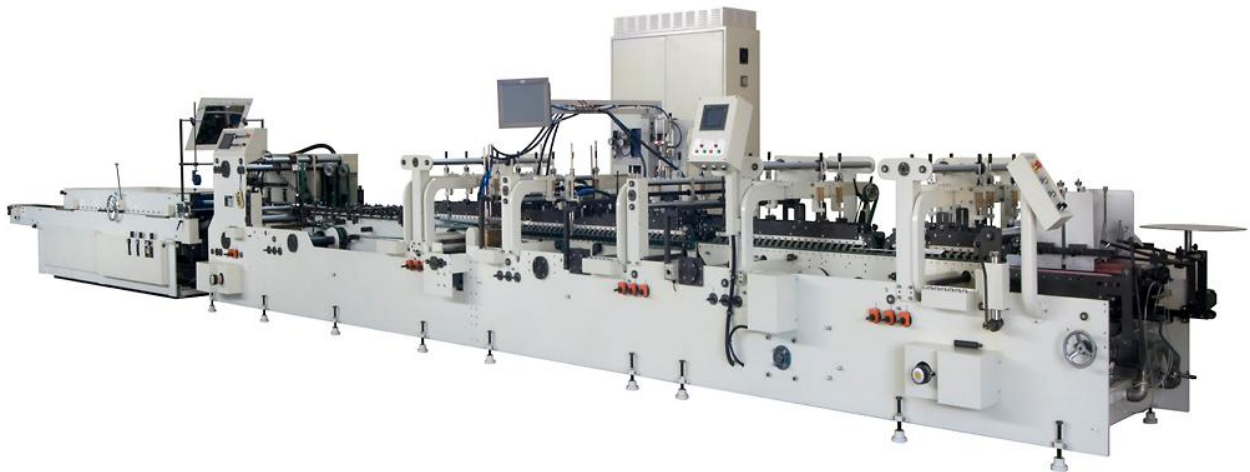


**Automatic folder gluer
model Brausse TA1100**

Highlights of all Brausse machines

- All electrical components are off the shelf brand names such as Omron and Telemecanique
- All PLC controls are from Mitsubishi
- All operating software in the local language



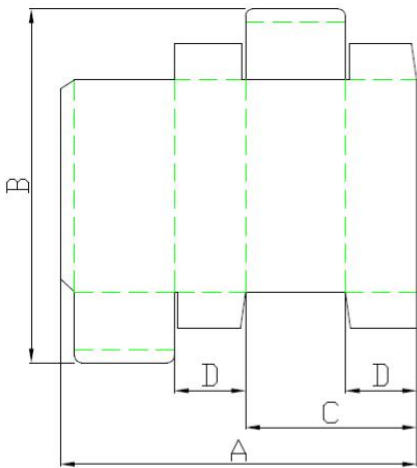
Pictures might be slightly different from reality



SCAPER EUROPE GMBH

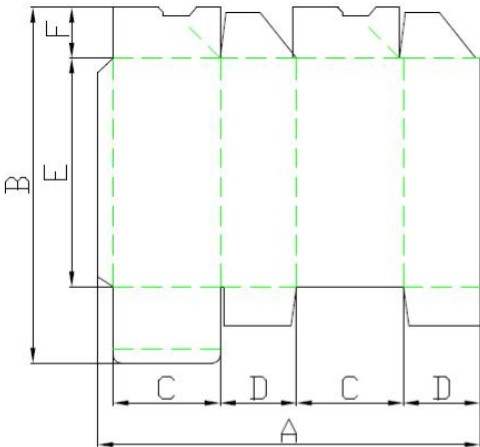
Specifications

Material:	solid board up to 800 g/m ² corrugated up to A-Flute
Trombone section max. belt speed	425 m/min
Max. belt speed:	325 m/min
Overall length:	12740 mm
Overall height:	2000 mm
Overall width:	1750 mm
Total net weight	8 t
Power voltage	400 V / 50 Hz
Power supply for main motor	22 kW
Power supply for additional motors	2,2 kW
Total power supply	30 kVA
Air supply / consumption	6 bar / 700 l per min
The compressed air quality must be according to ISO 8573/1 with:	
-Filtration on solid parts	Class 4
-Filtration on oil	Class 4
-Dry air	Class 4



Straight-line

A	120 -1100 mm
	80 -1100 mm with small box device
B	55-1100 mm
C	55 - 540 mm
D	minimum 8 mm



Lock bottom

A	160-1075 mm
B	150- 900 mm
C	mimimum 47 mm
D	minimum 30 mm
E	minimum 65 mm
F	minimum 28 mm



Feeder section

- Adjustable separate tension on each belt
- Eight individually adjustable feed belts with quick adjustment system
- Feeder start/stop can be controlled at all operator stations
- Two standard feed gates (30 mm wide) and one supporting feed gates (30 mm wide) for long, small boxes
- One lever-feeding gauge lifting mechanism to make easy feed belt adjustments
- Feeder belts adjustment can be done by one hand movement
- Short and long carriers for transport in the pre-breaker
- Four adjustable side plates
- Vibration system in feeder

Pre-breaking system

- Belt pre-brake system on the right side
- Guide pre-brake system on the left side
- Belt pre-brake system on the left side (standard on 4 and 6 corner option)
- Guide pre-brake system on the right side (standard on 4 and 6 corner option)
- Three carriers with split upper carriers in pre-breaking section. This allows special compound folds such as interior, Z folds (pre-breaking sword can be put at the left side only)
- Manual carrier-positioning system throughout the machine (for both carrier and upper belts)
- Top carriers have reinforced tops throughout for mounting accessories, which are single pin wrench adjustments
- Belt pre-break device on right side only
- Two upper and lower belt carriers

Gluing system

- Upper gluing wheel for lock bottom (5,2mm)
- Lower gluing wheel system (3,2 mm)
- Left and right lower gluing system

Folding section

- Three belt carriers
- Speed adjustment for left and right fold belt
- Entrance of the upper belt carrier adjustable in height
- Top belt can be lifted

Heavy duty double frame trombone section

- Batch counter and kicker
- Jam detector



SCAPER EUROPE GMBH

Compression section

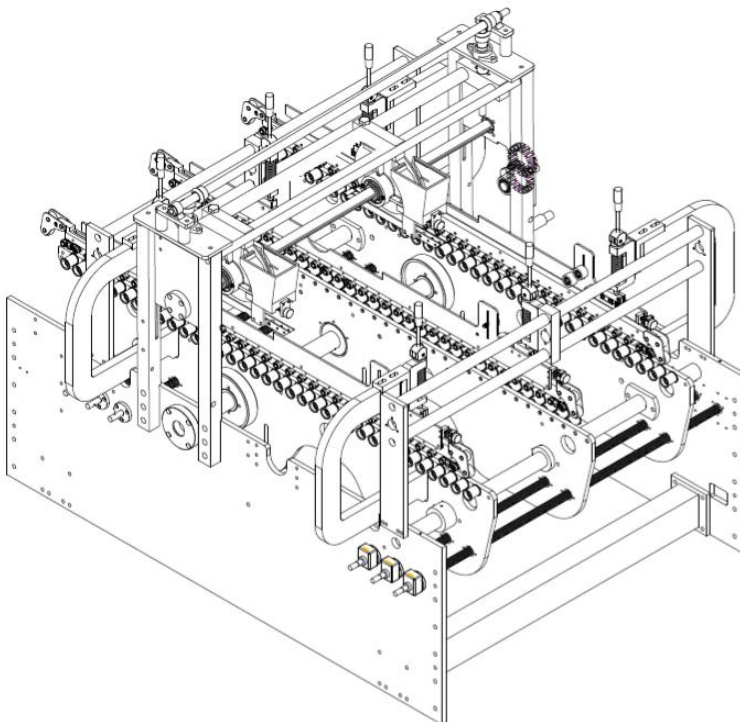
- Two operation modes for compressing the folded boxes:
 - Auto - belt speed depending on machine speed: box flow without spacing
 - Manual - belt runs at a constant speed
- Additional press belt for extra compression for crash lock boxes

General

- One pin wrench adjustment operation throughout the machine, operator friendly
- All the adjustment can be made without any tools
- Digital positioning gauge's
- Upper belt width 20 mm, lower belt width 25 mm on the pre-break & gluing section
- Upper belt width 16 mm, lower belt width 20 mm on the folding section
- Electronic batch counter and kicker
- Electronical remote control

Options:

Lock bottom section

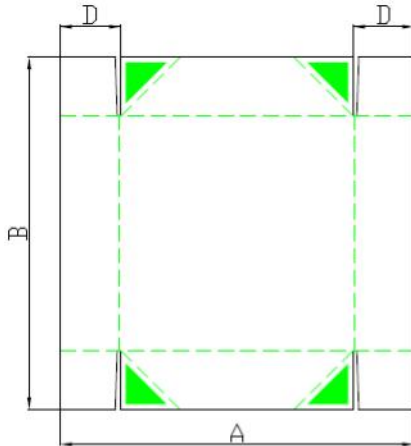




SCAPER EUROPE GMBH

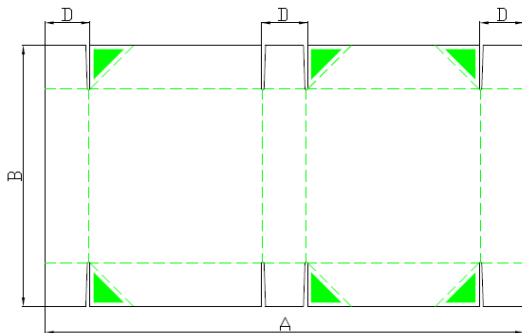
4 or 6 corner section

High pressure cold glue system configuration is needed for this option



4-Corner Collapsible Boxes

A 175-760 mm
B 160-900 mm
D 30-150 mm



6-Corner Collapsible Boxes

A 300-1050 mm
B 160- 900 mm
D 30- 150 mm

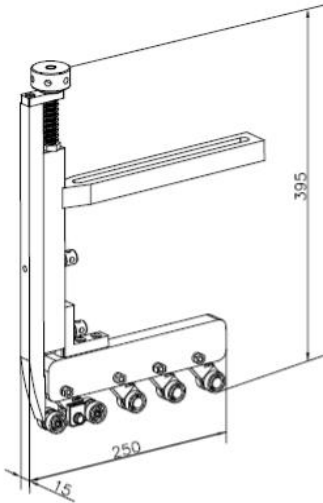
- Servo motor operated back folding system:
 - Two hook operation mode: #1 for short flap and #2 for long flap
 - Vacuum suction bar to hold the box blank firm when folding
 - Two shafts each individually controlled
 - Photo blank detecting sensor can be fixed on its position
 - Data entry key pad with digital display
- Easy one-hand carrier position adjustment
- Belt speed detecting encoder on the belt drive shaft



SCAPER EUROPE GMBH

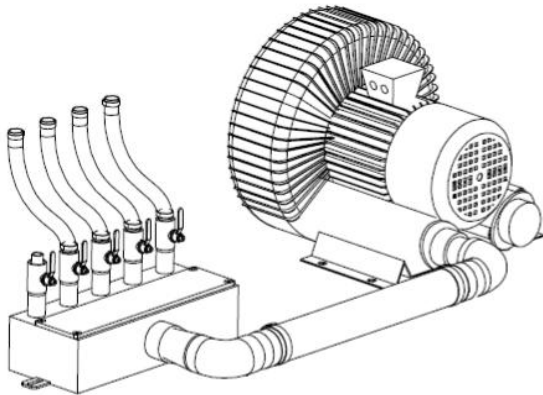
Mini box feeding gate

2 sets of feed gate (30mm) & 1 set of supporting feed gate are standard on the machine. Mini box feeding gates (15mm) will make small-box feeding easier.



Feeder belts with suction feeding system

It is used to improve the feeding capacity of products and selectively used depending on the type of products, especially for corrugated board and clear box



Anti static device

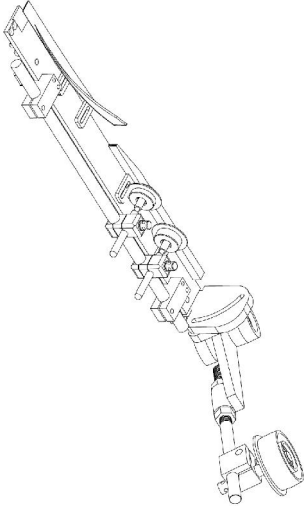
Protect from static-electricity, especially for clear/ transparent plastic box



SCAPER EUROPE GMBH

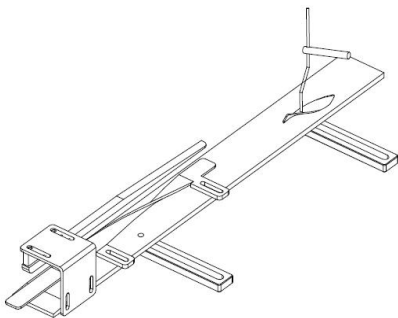
Pre brake system left – belt type

Used for pre-break. Optional on straight line model while standard on 4/6 corner model. Belt pre-break system (right side) and guide pre-break system (left side) are standard on all models.



Pre brake system right – guide type

Working function is similar to Side alignment section but a simplified device, easy to install. Especially for corrugated board.



Vacuum holding system for back folding

Vacuum suction bar holds box blank firm when folding

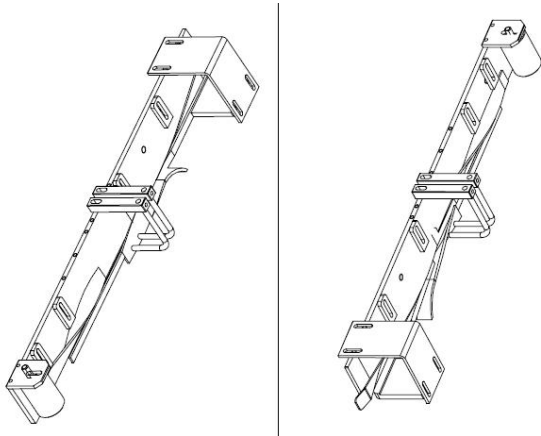




SCAPER EUROPE GMBH

Z-Folding device (2 – time or 3 – time folding device)

Applied for double or triple side flap folding (special box)



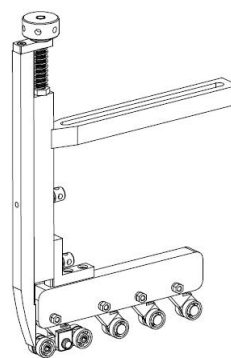
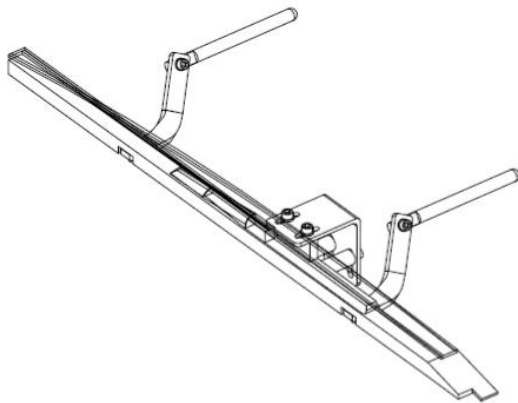
Bump and Turn

Three separated structure upper carriers manage to turn the blanks 90 degrees for further folding and gluing, which enlarges the applicability for different boxes.

Pneumatic lift carrier

Small boxes folding device

For small sized cardboard straight line box which size is smaller than the standard machine capacity





SCAPER EUROPE GMBH

Pocket folder device (big size)

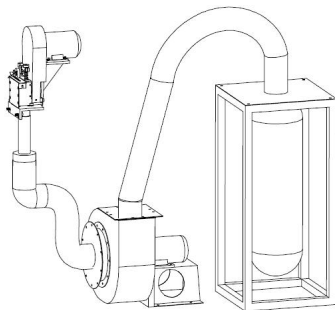
Pocket folder device (small size)

Extended press section & other devices for plastic boxes

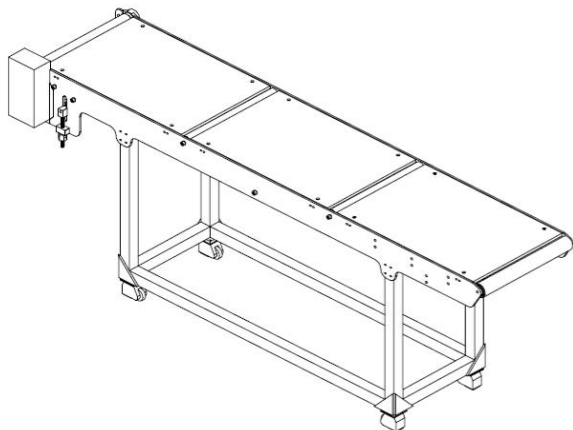


Grinder including suction device

Grind the glue flap surface of UV coating box for adhesive.



Extended conveyor end (where the operator takes of the boxes)





SCAPER EUROPE GMBH

Extra sponge belt on the conveyor

For extra compression of lower area & firm press of 4 corner box on conveyor section

Water batch counting system

Count the box number by spray marking

Extended conveyor 500 or 1200 mm

Second pre folding section

For additional pre-folding

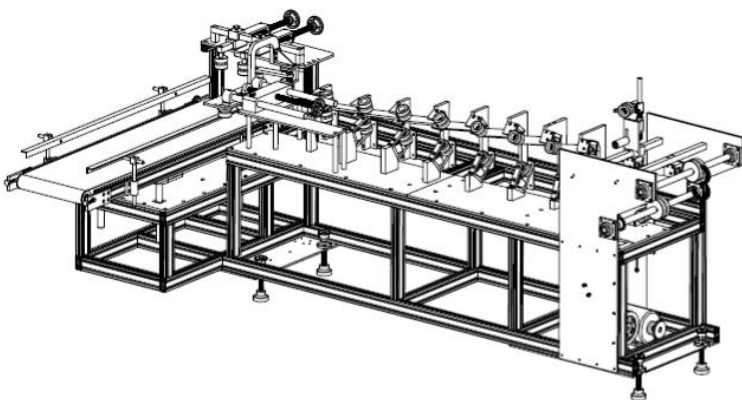
Side alignment system

Additional section between Feeder & Pre-breaking sections for correcting the box position after feeding



Motorized carrier adjustment

Packer



Following sizes can be used on the packer

Width min 60mm, max 450mm

Length min 10mm, max 450mm

Thickness Cardboard - E flute corrugated

High pressure cold glue system configuration

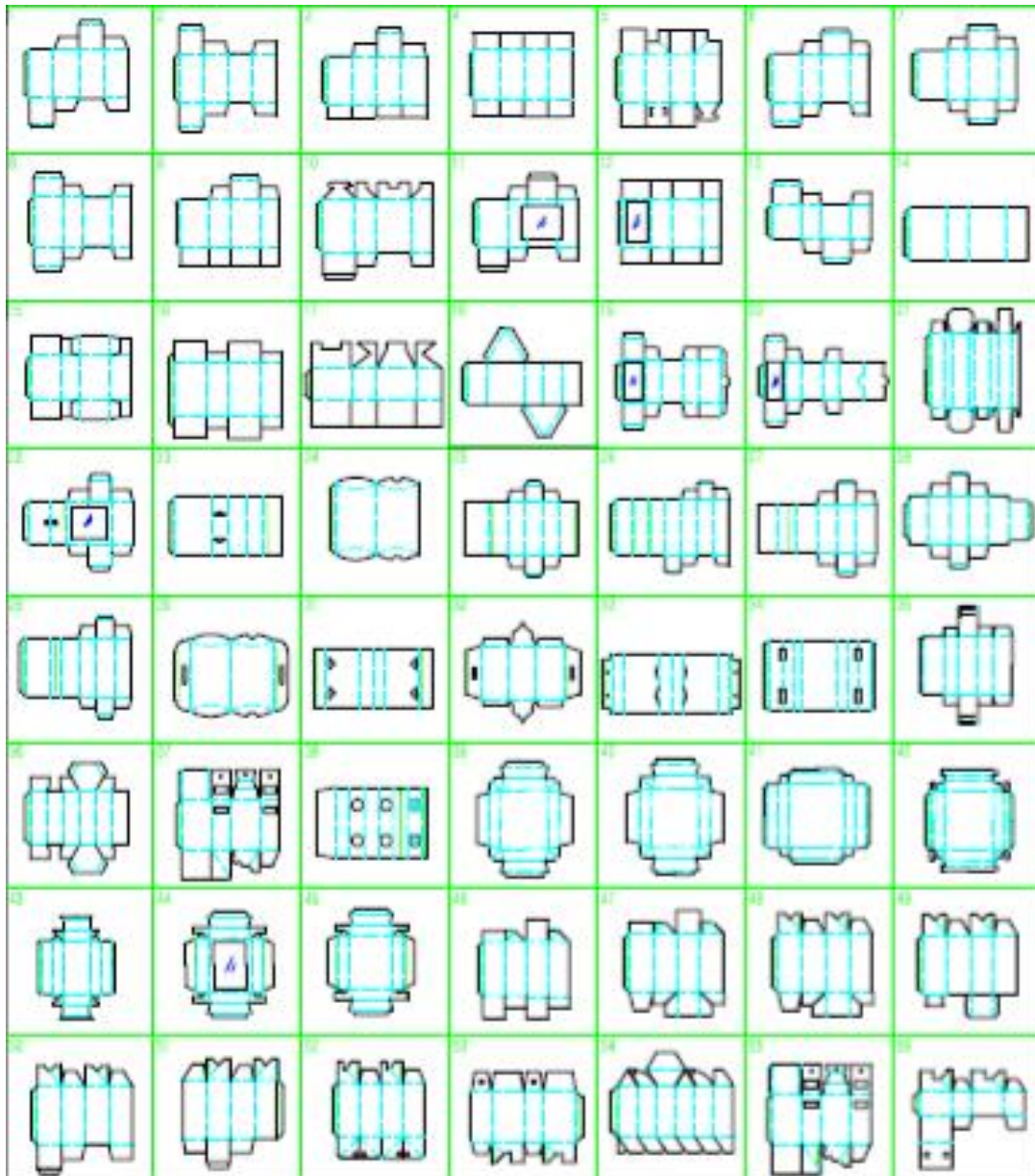
- Controller - type LA 404 (4 guns system)
- Controller - type Logicomm touch screen (6 & 8 guns system)
- Electric cold glue guns type LA 820 RC, with nozzle diameter 0,35 mm
- Double acting st.st. piston pump 1: 7 bar. Type LA300 with automatic glue regulator type LA382
- Kit: mounting brackets, connection cables and high pressure glue hoses
- Two photocell sensors LA650
- Mobile trolley for mounting the system components, including controller bracket
- St.st. manifold with ball valves (4 and 8 outputs)
- Glue viscosity up to 2000 mPas



Total system with LA 404 controller and 4 electric glue guns
Total system with Logicomm controller and 6 electric glue guns
Total system with Logicomm controller and 8 electric glue guns

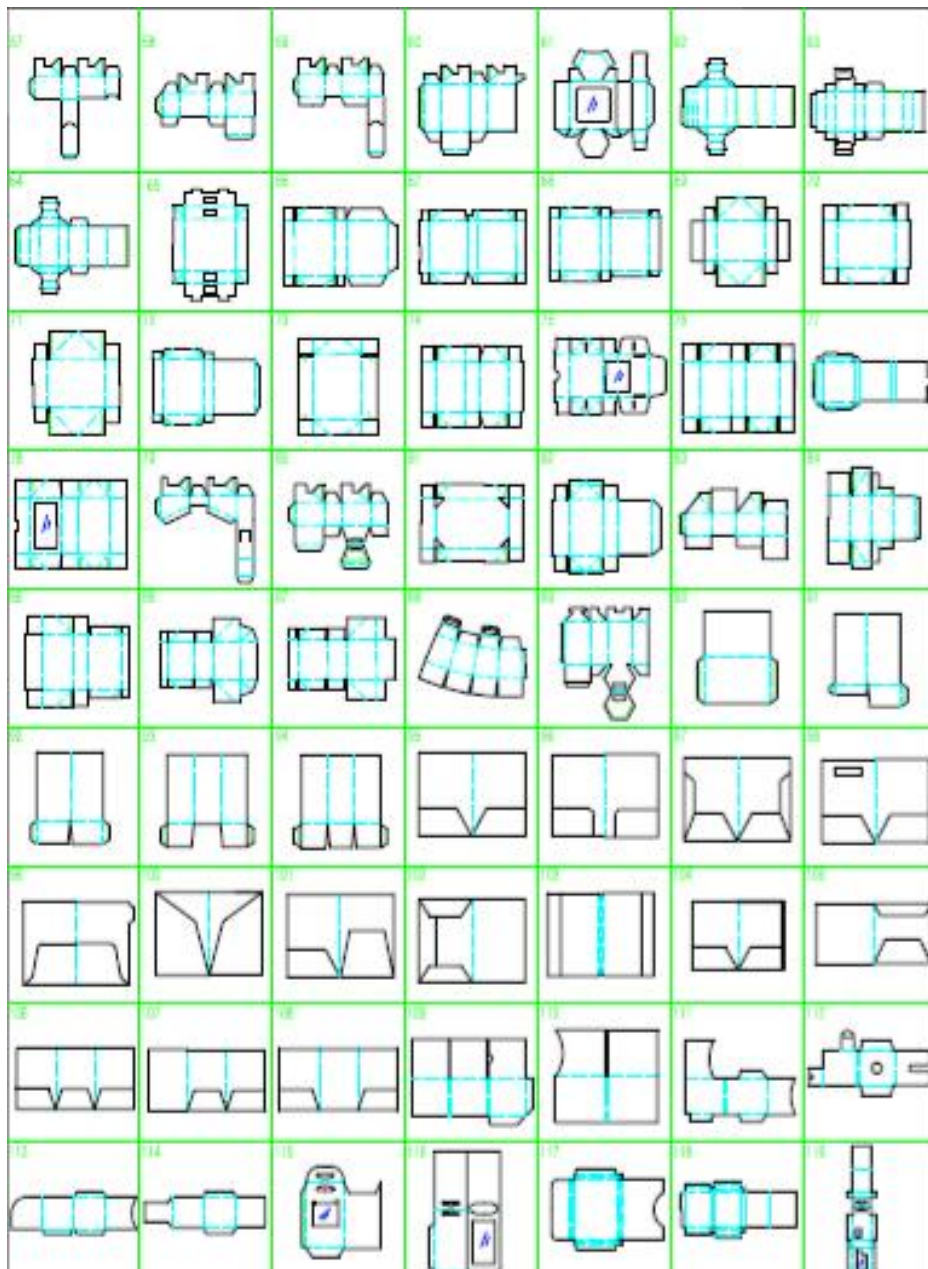


SCAPER EUROPE GMBH





SCAPER EUROPE GMBH





SCAPER EUROPE GMBH

Applicable blank forms

S=Standard O=Option

X=Impossible

No.	TA/TB C4/6	TA/TB C3	Option remark	No.	TA/TB C4/6	TA/TB C3	Option remark
1	s	s		61	o	o	Electronic gluing system
2	s	s		62	o	o	Electronic gluing system
3	s	s		63	o	o	Electronic gluing system
4	s	s		64	o	o	Electronic gluing system
5	s	s		65	o	o	Electronic gluing system
6	s	s		66	s	x	
7	s	s		67	o	x	Electronic gluing system
8	s	s		68	o	x	Electronic gluing system
9	s	s		69	s	x	
10	s	s		70	s	x	
11	s	s		71	s	x	
12	s	s		72	s	x	
13	s	s		73	s	x	
14	s	s		74	s	x	
15	s	s		75	s	x	
16	s	s		76	o	x	Electronic gluing system
17	s	s		77	s	s	
18	s	s		78	o	o	Electronic gluing system
19	s	s		79	s	s	
20	s	s		80	s	s	
21	o	o	Another prebreak section	81	s	x	
22	s	s		82	s	x	
23	s	s		83	s	s	
24	s	s		84	s	x	
25	s	s		85	s	x	
26	s	s		86	o	x	Electronic gluing system
27	s	s		87	o	x	Electronic gluing system
28	s	s		88	s	s	
29	s	s		89	s	s	
30	s	s		90	o	o	Electronic gluing system, pocket folder device



No.	TA/TB C4/6	TA/TB C3	Option remark	No.	TA/TB C4/6	TA/TB C3	Option remark
31	s	s		91	o	o	Electronic gluing system, pocket folder device
32	s	s		92	o	o	Electronic gluing system, pocket folder device
33	s	s		93	o	o	Electronic gluing system, pocket folder device
34	s	s		94	o	o	Electronic gluing system, pocket folder device
35	s	s		95	o	o	Electronic gluing system, pocket folder device
36	s	s		96	o	o	Electronic gluing system, pocket folder device
37	s	s		97	o	o	Electronic gluing system, pocket folder device
38	s	s		98	o	o	Electronic gluing system, pocket folder device
39	o	o	Electronic gluing system	99	o	o	Electronic gluing system, pocket folder device
40	o	o	Electronic gluing system	100	o	o	Electronic gluing system, pocket folder device
41	s	s		101	o	o	Electronic gluing system, pocket folder device
42	s	s		102	o	o	Electronic gluing system, pocket folder device
43	s	s		103	o	o	Electronic gluing system, pocket folder device
44	s	x		104	o	o	Electronic gluing system
45	o	o	Electronic gluing system	105	o	o	Electronic gluing system, pocket folder device
46	s	s		106	o	o	Electronic gluing system, pocket folder device
47	s	s		107	o	o	Electronic gluing system, pocket folder device
48	s	s		108	o	o	Electronic gluing system, pocket folder device
49	s	s		109	o	o	Electronic gluing system, pocket folder device
50	s	s		110	o	o	Electronic gluing system, pocket folder device
51	s	s		111	o	x	Electronic gluing system
52	s	s		112	o	x	Electronic gluing system
53	s	s		113	o	x	Electronic gluing system
54	s	s		114	o	x	Electronic gluing system
55	s	s		115	s	s	
56	s	s		116	s	x	
57	s	s		117	o	o	Electronic gluing system, pocket folder device
58	s	s		118	s	s	
59	s	s		119	s	x	Electronic gluing system, pocket folder device
60	s	s					

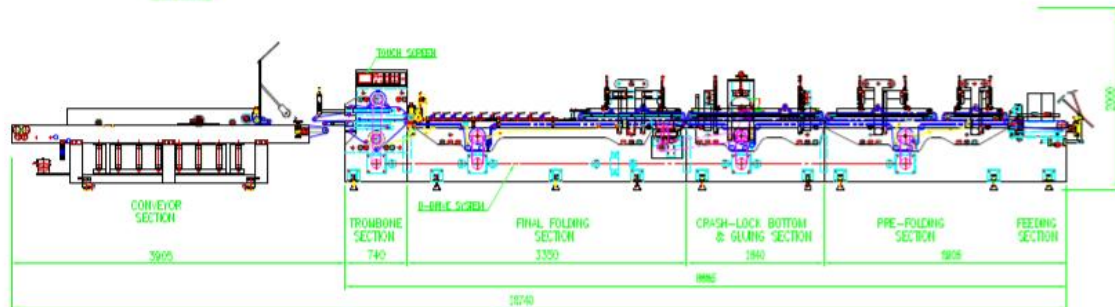
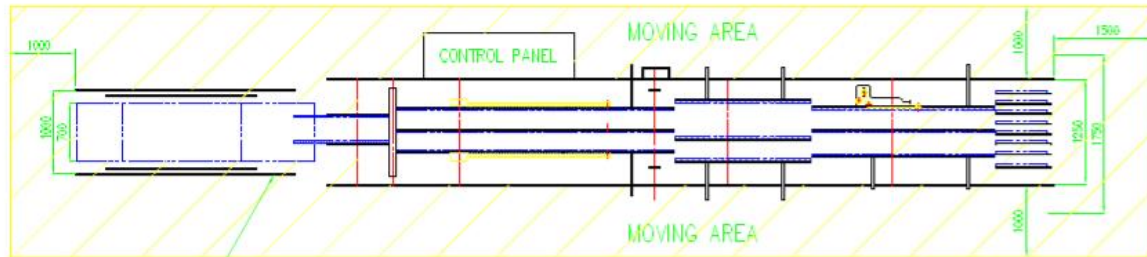


SCAPER EUROPE GMBH

(OPERATOR'S WORKING AREA)

TA 1100-C3

FOLDING & GLUER MACHINE



*** For complete folder-gluer specifications refer to the product brochure.

★ SPECIFICATION ★

MAIN MOTOR	22kW	TROMBONE SECTION MAX BELT SPEED	425 m/min
CONVEYOR MOTOR	2.2kW	MAX PUMPING CAPACITY	0.7m ³ /min
TOTAL POWER	30kVA	TOTAL WEIGHT	8000 kg



**TAE YONG
ETERNA**

DRAWN	DESIGNED	APPROVED	DWG DATE	UNIT/SCALE	DWG NO.
J. S. J. J.	J. S. J. J.	J. S. J. J.	08.04.10	mm/1:1	TA-1100-C3
TITLE : TA-1100-C3					AS (480027)

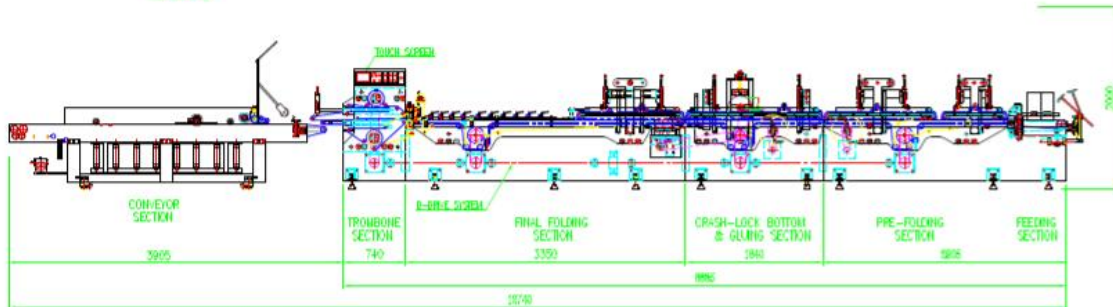
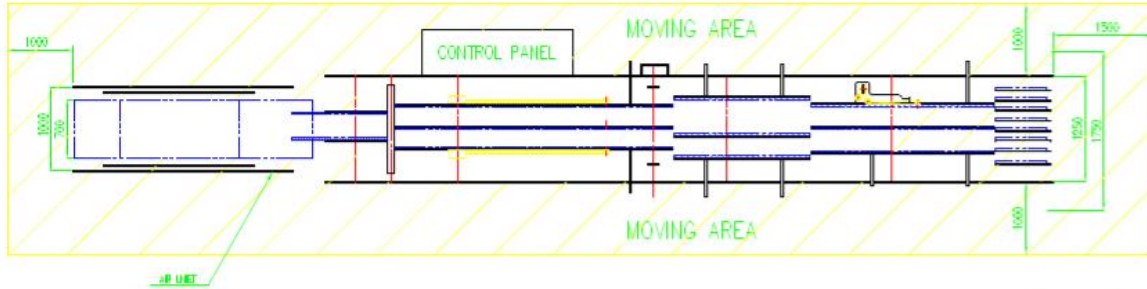


SCAPER EUROPE GMBH

(OPERATOR'S WORKING AREA)

TA1100-C6

FOLDING & GLUER MACHINE



*** For complete folder-gluer specifications refer to the product brochure.

* SPECIFICATION *

MAIN MOTOR	22KW	TROMBONE SECTION MAX BELT SPEED	425 m/min
CONVEYOR MOTOR	2.2KW	MAX PUMPING CAPACITY	0.7m ³ /min
TOTAL POWER	40kVA	TOTAL WEIGHT	8500 kg



**TAE YONG
ETERNA**

DRAWN	DESIGNED	APPROVED	DWG DATE	UNIT	SCALE	DWG NO.
J. S. J. P. H.	J. S. J. P. H.	P. C. A. B. E.	08.04.10	mm	NONE	TA-1100-C6
TITLE : TA-1100-C6						AS (4801287)

IMPORTANT:

- 2 year warranty
- 5 days training for operating personnel included
- Installation included